

Aluminum Electrolytic Capacitors

1. Carrier Tape

Fig. 1-1

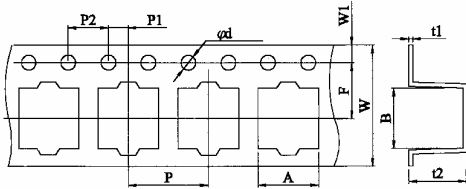
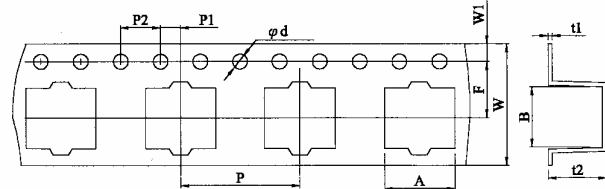


Fig. 1-2



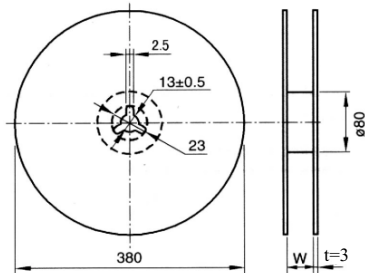
Unit: mm

$\phi D \times L$	A	B	ϕd	F	P	P1	P2	t1	t2	W	W1	Fig. No.
4×5.3	5.0	5.0	1.5	5.5	8	2.0	4.0	0.4	5.8	12.0	1.75	1-1
4×5.7	5.0	5.0	1.5	5.5	8	2.0	4.0	0.4	6.2	12.0	1.75	1-1
5×5.3	6.0	6.0	1.5	5.5	12	2.0	4.0	0.4	5.8	12.0	1.75	1-1
5×5.7	6.0	6.0	1.5	5.5	12	2.0	4.0	0.4	6.2	12.0	1.75	1-1
6.3×5.3	7.0	7.0	1.5	7.5	12	2.0	4.0	0.4	5.8	16.0	1.75	1-2
6.3×5.7	7.0	7.0	1.5	7.5	12	2.0	4.0	0.4	6.2	16.0	1.75	1-2
6.3×7.7	7.0	7.0	1.5	7.5	12	2.0	4.0	0.4	8.3	16.0	1.75	1-2
8×6.5	8.7	8.7	1.5	7.5	12	2.0	4.0	0.4	6.8	16.0	1.75	1-2
8×10	8.7	8.7	1.5	11.5	16	2.0	4.0	0.4	11	24.0	1.75	1-2
10×10	10.7	10.7	1.5	11.5	16	2.0	4.0	0.4	11	24.0	1.75	1-2
Tol.	±0.2	±0.2	+0.1/-0	±0.1	±0.1	±0.1	±0.1	±0.1	±0.2	±0.3	±0.15	

2. Packaging

Fig. 2-1

Reel

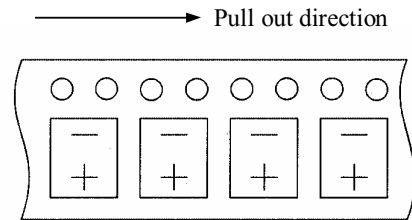


Unit: mm

$\phi D \times L$	4~5×5.3~5.7	6.3×5.3~7.7	8×6.5	8~10×10
W	14	18	18	26

Fig. 2-2

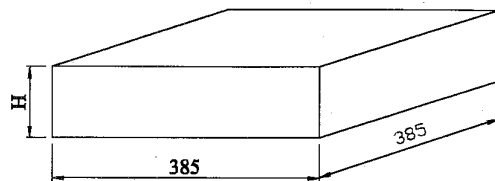
Polarity



3. Packing specification

Fig. 3-1

Packing box dimensions



Unit: mm

$\phi D \times L$	4~5×5.3~5.7	6.3×5.3~7.7	8×6.5~10	10×10
H	105	125	125	180

Packing number

$\phi D \times L$	Number/Reel	Number/Box
4 ϕ	2,000	10,000
5~6.3 ϕ	1,000	5,000
8×6.5	1,000	5,000
8×10	500	2,000
10×10	500	2,000